

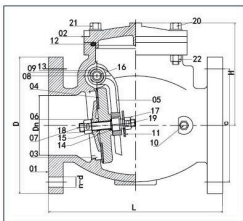
300PSI Flanged End Swing Check Valve

Model No.:XQH-300



Technical Specifications:

- 1.Design Standard:AWWA C508
- 2.Nominal Pressure:300PSI
- 3.Flange Standard:ANSI B16.1 Class125 or according to the customer's requirements
- 4.Both inside and outside of the body need Epoxy Resin Coating



SIZE CHART

SIZE ITEM	2"	2-1/2"	3"	4"	5"	6"	8"	10"	12"
Dn	51	64	80	100	126	152	204	254	302
L	203	216	241	292	330	356	495	622	698
D	152	178	191	229	254	279	343	406	483
c	120.5	139.5	152.5	190.5	216	241.5	298.5	362	432
n-d	4-ø19	4-ø19	4-ø19	8-ø19	8-ø22	8-ø22	8-ø22	12-ø25	12-ø25
H	142	148	163.5	172	237	233	301	348	419

NO.	Name	Material/Standard	Remark
1	Body	ASTM A536 65-45-12	
2	Bonnet	ASTM A536 65-45-12	
3	Seat Ring	ASTM A148 C95400	
4	Disc	ASTM A536 65-45-12	
5	Rocker Arm	ASTM A536 65-45-12	
6	Baffle Plate	ASTM A148 C95400	
7	Middle Stem	ASTM A276 SS304	
8	Pinned Stem	ASTM A276 SS304	
9	Bracket Screw	ASTM A351 SS304	No show in drawing
10	Plug	ASTM A148 C95400	
11	Gasket	ASTM A276 SS304	
12	O-Ring (large)	ASTM D2000 EPDM	
13	O-Ring (for bracket screw)	ASTM D2000 EPDM	No show in drawing
14	O-Ring (for mid stem)	ASTM D2000 EPDM	
15	O-Ring (for mid stem small)	ASTM D2000 EPDM	
16	Bronze bushing	powder metallurgy	No show in drawing
17	SS304 Outer Hexagon Nut M12	ASTM A276 SS304	
18	SS304 Outer Hexagon Nut M12	ASTM A276 SS304	
19	SS304 Cotter Pin 4x55	ASTM A276 SS304	
20	"M12x60 Zinc Outer Hexagon Bolt (half thread) "	STEEL	
21	"M12x40 Zinc Outer Hexagon Bolt (full thread) "	STEEL	
22	M12 Zinc Outer Hexagon Nut	STEEL	